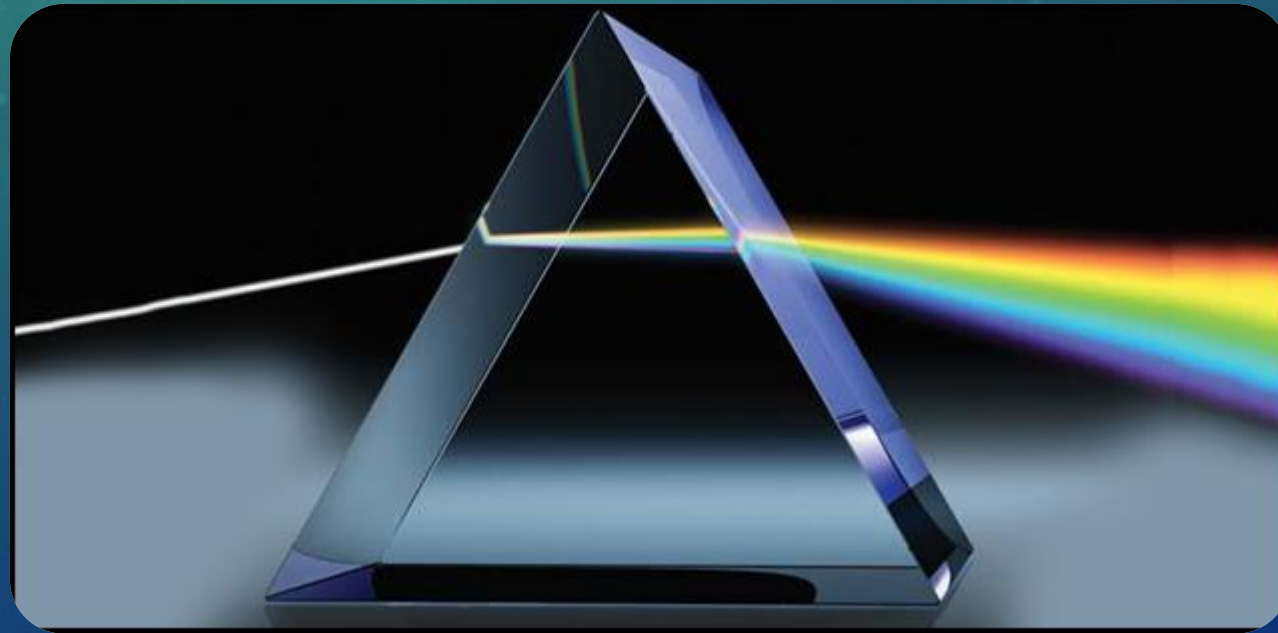
The background features a gradient from light green at the top to dark blue at the bottom. On the left side, there are several circular elements: a large scale with numbers from 140 to 260, and several smaller circles with arrows indicating clockwise or counter-clockwise rotation. The text is positioned on the right side of the image.

# UNA PEQUEÑA INTRODUCCIÓN A LA ÓPTICA

KARLEYDA SANDOVAL

# DEFINICIÓN

Estudio del comportamiento y propiedades de la luz



# ÁREAS DE APLICACIONES

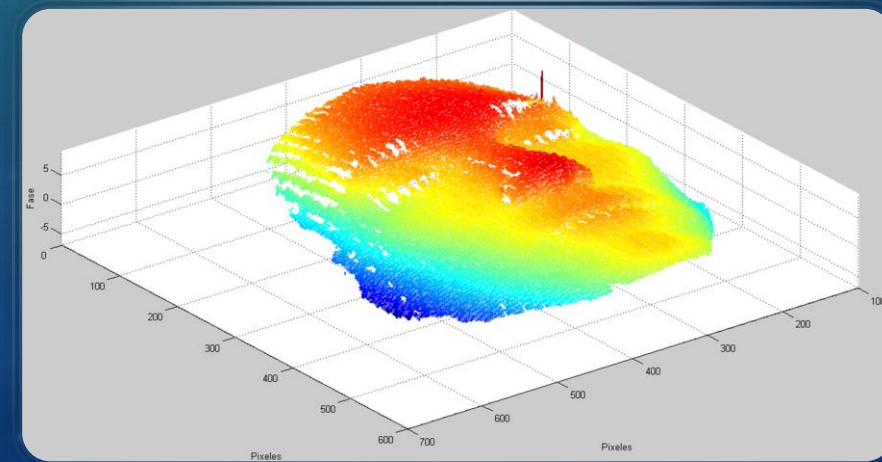
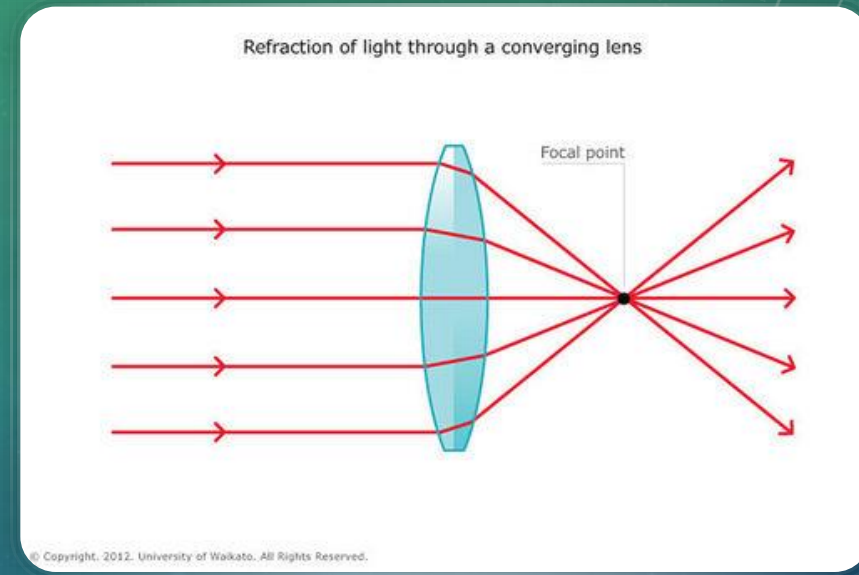
Detección y Medición

Desarrollo de nuevas tecnologías

# ÓPTICA CLÁSICA

- Óptica Geométrica: Diseños Ópticos
- Ondas y Óptica: Detección óptica

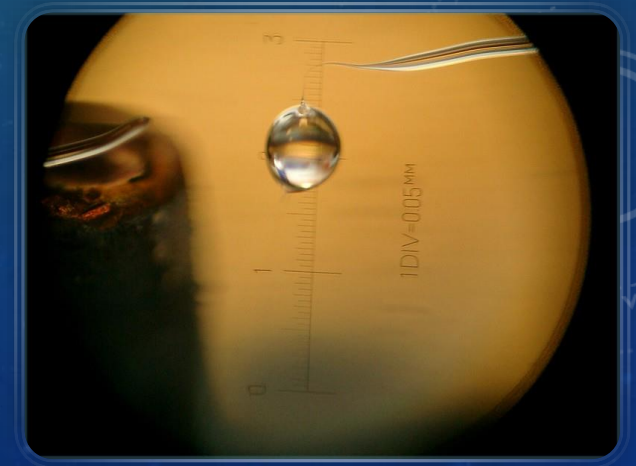
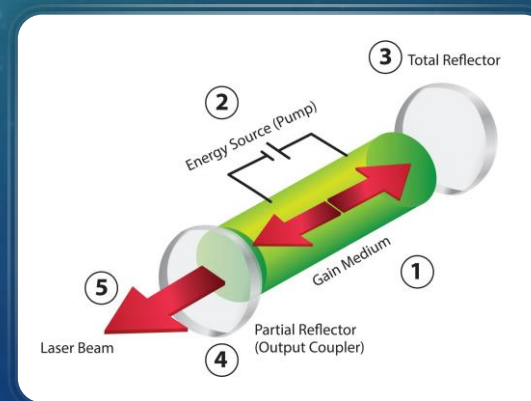
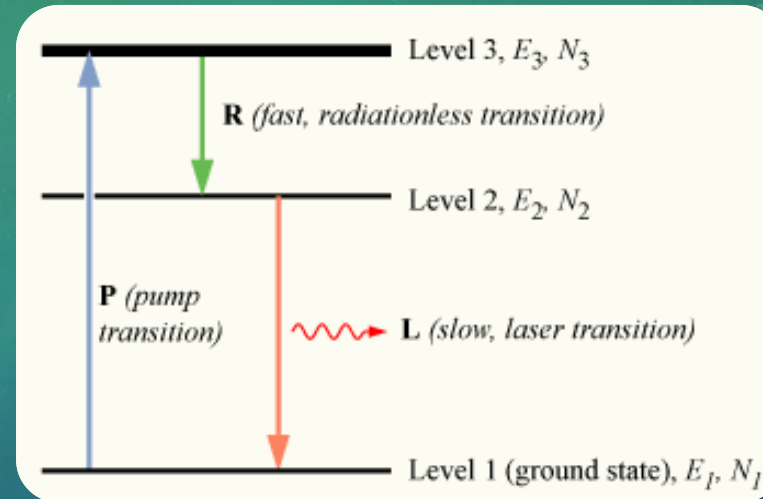
↓  
PRINCIPIO DE INTERFERENCIA



# FOTÓNICA

- Lasers

- Cavidades

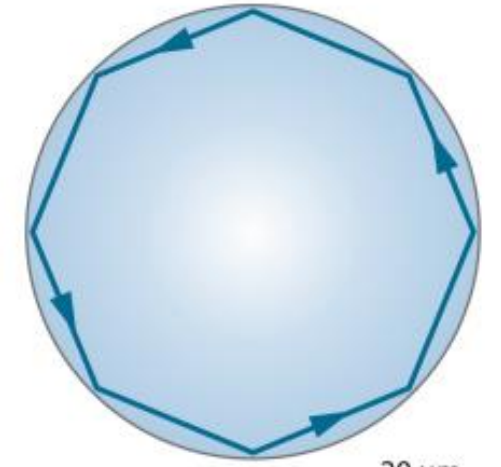


# “WHISPERING GALLERY MODES”

Acoustic whispering gallery



Optical whispering gallery



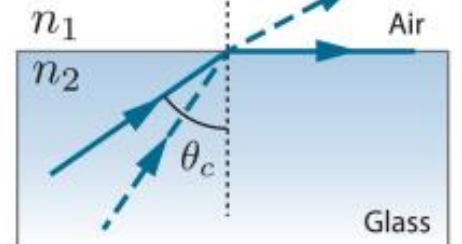
10 m

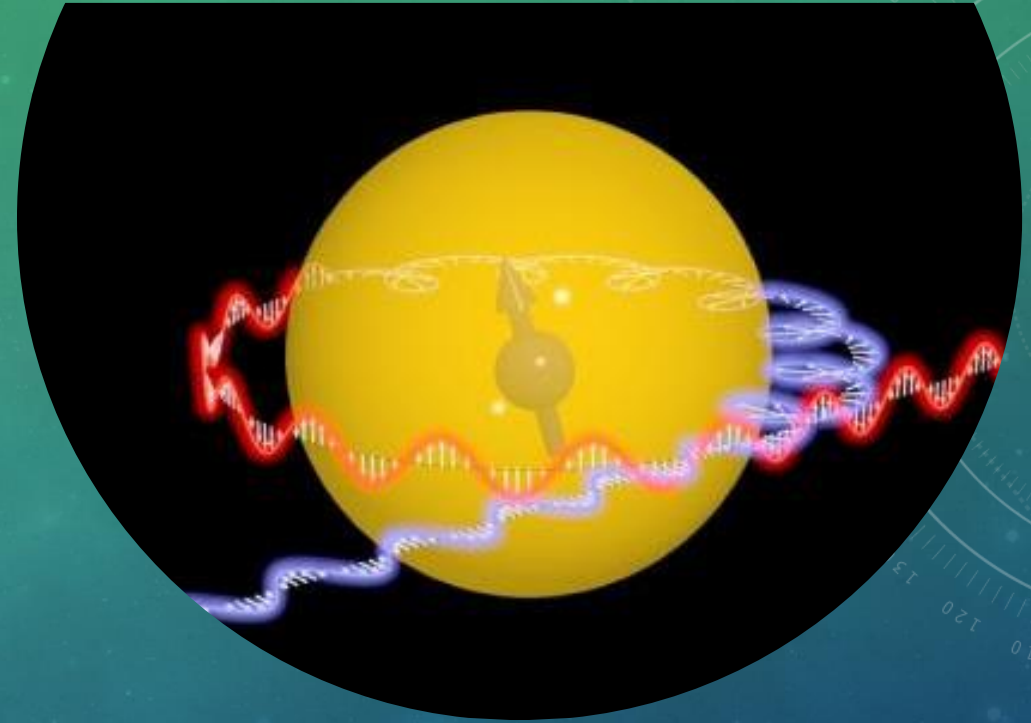
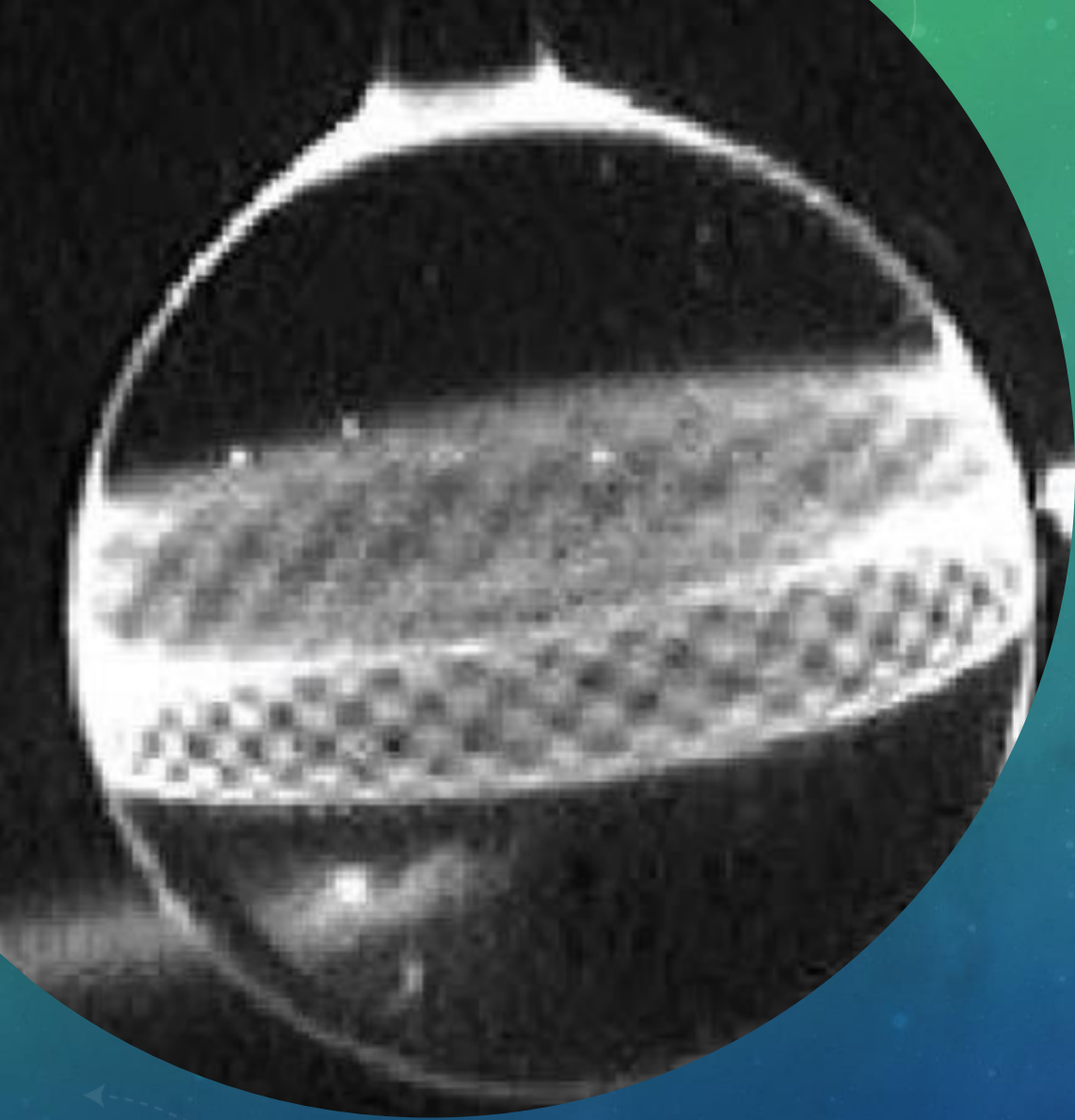
20 μm

total internal reflection  
for incident angle  $\theta > \theta_c$

whispering gallery

St. Paul's cathedral



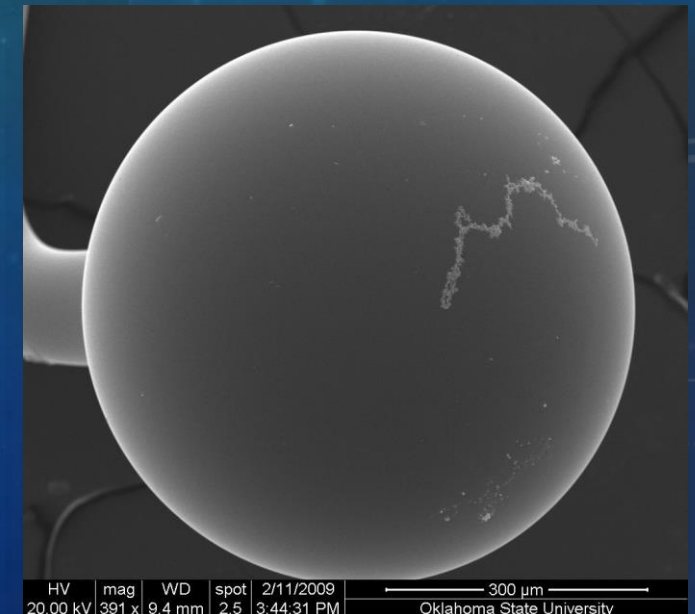
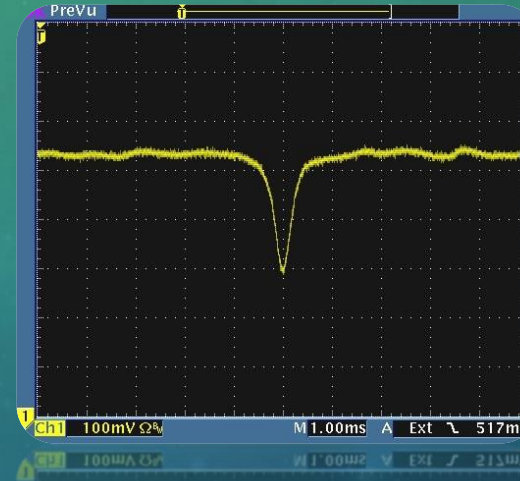


“WHISPERING GALLERY  
MODES”

# APLICACIONES DE LOS WHISPERING GALLERY MODES

Sensores Biofísicos y  
Químicos

Creación de “Luz Lenta”





¡GRACIAS!  
NOS VEMOS EN EL BREAK ROOM 1